



CAPE TOWN

Tel: +27 (0)87 231 0253

Unit 5 | M5 Freeway Park
Upper Camp Rd | Maitland | 7405
Cape Town | South Africa

E mail: info@msasa.co.za | www.msasa.co.za

JOHANNESBURG

Tel: +27 (0)82 785 8529

64 Maple Street | Pomona
Kempton Park | Johannesburg | 1619
South Africa



SCHOMBURG GmbH & Co. KG

Aquafinstrasse 2-8

D-32760 Detmold, Germany

phone +49-5231-953-00

fax +49-5231-953-108

email export@schomburg.de

www.schomburg.com



Subject to changes. Consult current Technical Data Sheet for most recent information.

04/16-SF/HS/JD

Rapid setting swellable
waterproofing membrane
and plugging mortar



FIX 20-T





FIX 20-T...

... is a particularly rapid setting cement-based mortar for sealing water-bearing holes, splits, cracks in concrete, masonry work and natural stone constructions. Flowing water is stopped within seconds supported by the integrated swelling power. The strong adhesion to the substrate ensures a durable seal to the leaking area.

Rapid setting swellable waterproofing membrane and plugging mortar

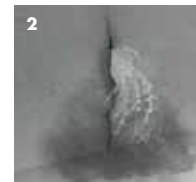
Properties/Advantages:

- Chloride free, without components which cause corrosion
- Highly reactive rapid mortar
- Strong bond to concrete substrates
- Rapid setting - also under water
- Compatible with the crystalline waterproofing system AQUAFIN®-IC
- For interior and exterior use

Application:

1. Opening cracks and damaged areas
2. Immediate waterproofing of water leaks
3. Mixing FIX 20-T
4. Plugging the water leak

Please observe the current Technical Data Sheet.



Packaging: 6 and 20 kg plastic buckets

**Our competency –
your advantages!**