

Professional Joint-Tape Technology



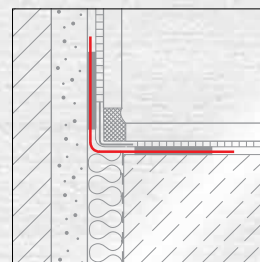
The ASO®-Joint-Tape-2000-Series is highly resistant to alkalis, oil and grease and is composed of an innovative composite laminate material based on a water-resistant membrane and a polypropylene fleece. Waterproofing of ASO®-Joint-Tape overlaps is guaranteed by the excellent adhesion properties. All ASO®-Joint-Tape-2000 types can be used below grade and outdoors thanks to its rot proof resistance and UV stability.

The application of ASO®-Joint-Tape-2000 at overlaps and corners is both simple and easy. Preforated edges enhance tape adhesion, proper embedding into the waterproofing material and transfer of shear forces.

TYPICAL AREAS OF APPLICATION

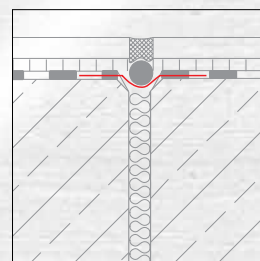
Wet rooms (bathrooms, showers & kitchens) under ceramic tiles

- ASO®-Joint-Tape-2000 & ASO®-Joint-Tape-2000-Corners
- ASO®-Joint-Tape-2000-Sanitary
- ASO®-Joint-Sleeve-Floor
- ASO®-Joint-Sleeve-Wall



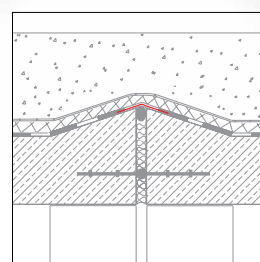
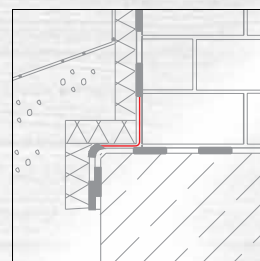
Submerged areas and construction joints

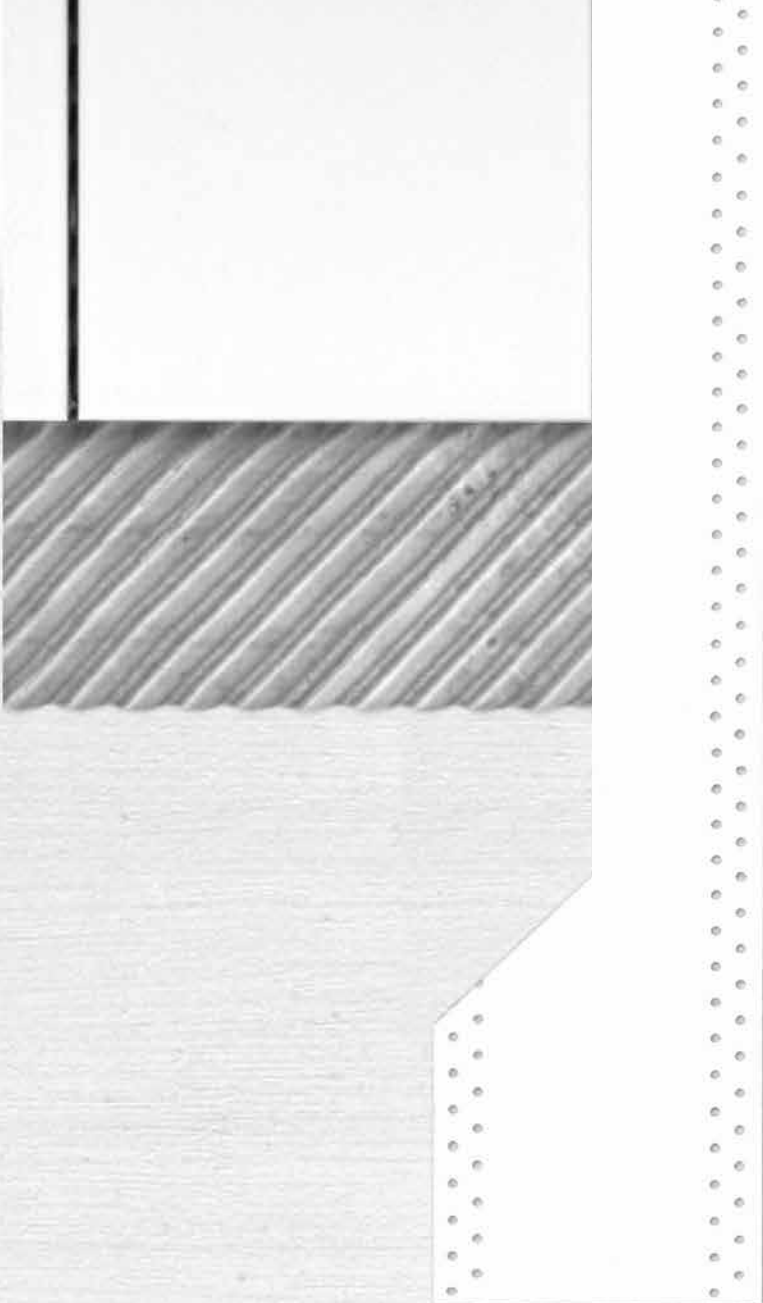
- ASO®-Joint-Tape-2000-S & ASO®-Joint-Tape-2000-S-Corners
- ASO®-Joint-Tape-2000-S-Wide
- ASO®-Joint-Sleeve-Floor
- ASO®-Joint-Sleeve-Wall
- ASO®-Joint-Tape-2000-S-T piece
- ASO®-Joint-Tape-2000-S-Cross piece



Waterproofing of below grade and floating slabs (multi-storey garages/car parks)

- ASO®-Joint-Tape-2000
- ASO®-Joint-Tape-2000-S
- ADF®-Joint-Strip
- ADF®-Coving-Strip
- ADF®-Pipe-sleeve

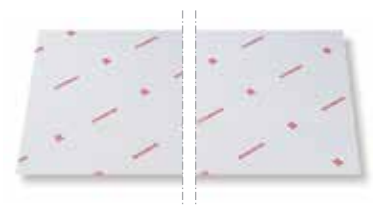




ADVANTAGES

- Resistant to a wide range of chemicals including: brine, vegetable and animal fats, diluted acids (5% Lactic, 10% Citric, 3% Hydrochloric), alkalis, hydrocarbons (premium and diesel fuels) and salt solutions (10% Potassium Hydroxide, 25% Iron Sulphate, 30% Iron Chloride)
- UV stable – suitable for outdoor applications
- Broad service temperature: from -20°C to + 90°C
- Excellent adhesion with many SCHOMBURG waterproofing materials
- Ultimate elongation: over 600% for ASO®Joint-Tape-2000-S
over 60% for ASO®Joint-Tape-2000
- Preforated edges for enhanced adhesion
- Simple and economic extension of rolls – no welding or spark-testing required
- Pre-formed junction pieces available (external/internal corners, T and X pieces)
- Tailor made pieces are easily prepared on site to accommodate extended and swerving curves as well as intricate details
- Warranted system

	Width	Length	Article-No.
ASO®-Joint-Tape-2000			
Standard Joint tape, used for safe sealing of movement- and connection joints with SCHOMBURG waterproofing systems beneath ceramic tiles.	12 cm	10 m	2 05936 001
	12 cm	50 m	2 05936 002
	20 cm	10 m	2 05936 003
	20 cm	50 m	2 05936 004
ASO®-Joint-Tape-2000-S			
Special Joint tape, used in critical applications such as swimming-pools, underground car parks, and clean (potable) and dirty water.	20 cm	25 m	2 05939 001
	20 cm	50 m	2 05939 002
	12 cm	50 m	2 05939 003
ASO®-Joint-Tape-2000-S-Wide			
Supplied in widths up to 160 cms for on-site tailoring of intricate details -such as mammoth curves - that have been a problem for architects and designers in the past.	50-160 cm	n.W.	2 05939 004



Width Length Article-No.

ASO®-Joint-Tape-2000-Corners

Preformed external and internal 90° corner pieces with twin edge perforations.

12 cm 90° ext 2 05943 001
12 cm 90° int 2 05944 001



ASO®-Joint-Tape-2000-S-Corners

Preformed external and internal angle pieces with twin edge perforations. Available in 45° & 90° angles.

20 cm 90° int 2 05939 006
20 cm 90° ext 2 05939 005
20 cm 45° int 2 05939 008
20 cm 45° ext 2 05939 007

ASO®-Joint-Sleeve-Wall

Incorporates a preformed 12 mm-dia opening suitable for sealing of 1/2, 3/4 & 1" pipe penetrations in walls.

12 x 12 cm 2 05937 001



ASO®-Joint-Sleeve-Floor

Suitable for sealing of floor drainage details with diameters up to 350 mm.

45 x 45 cms 2 05938 001



ASO®-Joint-Tape-2000-S-Cross piece

Ready to use piece for sealing of crossing expansion joints with pre-formed tuck in slot, suitable for 15 mm to 30 mm wide joints.

for 20 cm tape 2 05940 001



ASO®-Joint-Tape-2000-S-T piece

Ready to use piece for sealing of T shaped expansion joints with pre-formed tuck in slot, suitable for 15 mm to 30 mm wide joints.

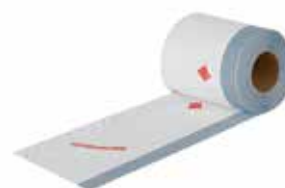
for 20 cm tape 2 05941 001



ASO®-Joint-Tape-2000-Sanitary

Designed for sanitary details, it is supplied with self-adhesive and release paper on one edge of the roll and standard perforations on the other. This makes it suitable for termination details of thixotropic or liquid applied waterproofing materials to plastic, wood, aluminium or enamel/ceramic elements such as bath tubs, showers, worktops, window and door frames.

12 cm 10 m 2 05942 001
12 cm 25 m 2 05942 002
12 cm 50 m 2 05942 003



Most typical waterproofing failures can be traced back to leaky joints which are a result of faulty sealing of construction joints, expansion joints, up stands, sleeves and pipe penetrations. Moisture or water ingress can also occur due to selecting an incorrect waterstop or joint tape, not properly welding overlaps or waterstop displacement during concreting.

The main purpose of using a joint tape – when used with an effective waterproofing material – is to provide a reliable seal against the passage of moisture, water or other mild liquid chemicals. The joint tape should have the ability to accommodate typical stresses (tensile and flexural) developed in expansion and contraction joints as well as vibrations or sudden thermal differences common due to the flow of fluids in pipes.

SCHOMBURG joint tape solutions exceed industry standards.

Your **GUARANTEE** to a safe, durable and long lasting waterproof application.

SCHOMBURG ASO®-Joint-Tapes offer a complete solution for the sealing and waterproofing of all joints, pipe and sleeve penetrations. In addition, innovative solutions are possible due to the versatile nature of the ASO®-Joint-Tapes.

SCHOMBURG ASO®-Joint-Tapes are incomparable to other waterstops or any joint tapes.

To guarantee a long-term, watertight seal of joints, connections and pipe penetrations, the joint tapes must:

- Be compatible with the waterproofing materials used
- Demonstrate excellent adhesion with the substrate
- Meet with project requirements and specifications

The innovative composite (multi-layer) laminate system used to produce ASO®-Joint-Tape-2000 ensures perfect adhesion between the substrate and waterproofing material as well as at overlaps.



The SCHOMBURG Group develops, produces and markets high quality building product systems for

- Construction waterproofing
- Construction restoration
- Tiles/natural stone installation
- Screed installation
- Civil engineering
- Surface protection
- Concrete technology

SCHOMBURG is recognised for its development competency and is distinguished both nationally and internationally with over 75 years in the market. System based construction products from its own production plants are held in high esteem throughout the world.

Industry professionals value the level of service provided by the SCHOMBURG Group, along with our large range of high quality products.

In order to stay at the forefront of a continuously advancing market we are always investing in research and development of new and current products. This guarantees high quality products, which in turn leads to customer satisfaction.



SCHOMBURG GmbH & Co. KG
Aquafinstraße 2 - 8
D-32760 Detmold (Germany)
phone +49-5231-953-00
fax +49-5231-953-108
email export@schomburg.de
www.schomburg.com



MSASA
Construction Solutions for Africa

CAPE TOWN
Tel: +27 (0)87 231 0253
Unit 5 | M5 Freeway Park
Upper Camp Rd | Maitland | 7405
Cape Town | South Africa

JOHANNESBURG
Tel: +27 (0)82 785 8529
64 Maple Street | Pomona
Kempton Park | Johannesburg | 1619
South Africa

Email: info@msasa.co.za | www.msasa.co.za